

SACRAMENTO COUNTY

OFFICE OF EMERGENCY SERVICES



2023-2024 Severe Weather – Cold After Action Report



June 12, 2024

EXECUTIVE SUMMARY

This report evaluates some of the successes of the activation as well as opportunities for improvement. Some of the key successes and improvement opportunities are:

Key Successes

The Severe Weather Guidance was activated for unusually low temperatures, which posed a risk to the public for several days. Successes included coordination calls and coordination of supplies for the efficient operation of warming centers.

The permanent deployment of animal kennels to locations routinely used as warming centers reduced the lead time needed to open a facility and reduced the workload of County Animal Care and Services. When needed, Animal Control Officers were able to deliver kennels the same day as the request.

The Sacramento County Department of Homeless Services and Housing's new contract with First Step Communities to operate warming centers was a great step in established locations ready to quickly activate. It also provided a location staffed with professionals experienced in working with the unhoused community.

Pre-established and trusted relationships were instrumental in the very quick coordination and activation of Howe Park as a County sponsored warming center.

Key Improvement Areas

Equipment: Moving the shelter trailer to a center requires the use of a tow vehicle and someone comfortable towing a trailer. It also means having to move items in and out of it for setup, operation, and demobilization in a very tight space. Unlike a shelter where many of the large items are removed, making space in the trailer to maneuver. There are large, sometimes heavy, cases with little space to maneuver. There is also a large step down from the floor of the trailer to the ground which is dangerous while carrying equipment.

Standardized Reporting: Guest registration and attendance count policies for cooling, warming, clean air centers and shelters are not standardized between facilities or between county and city departments, or partner agencies. Standardizing helps ensure we capture and report the same numbers in the same format. When volunteers transition between the types of facilities there is more familiarity and less training required.

ACTIVATION OVERVIEW

Incident Name	2023-2024 Severe Weather Cold
Incident Dates	NWS Freeze Warning – 25-29 Nov Phase III Temps – 7-9 Jan
Operational Area	Sacramento County
OES Region	Inland Region IV
Hazards	Severe Weather – Cold
Activation Status	Duty Officer
Health Officer Advisory	None
Sponsor	Sacramento County Office of Emergency Services
Participating Organizations	Located in the Appendix B
Point of Contact	Jason R. D’Alessio Emergency Operations Coordinator Sacramento County Office of Emergency Services dalessioj@sacounty.gov (916) 874-7043 office

CONTENTS

Executive Summary	i
Activation Overview	ii
Key Chronological Events	1
General Statistics	9
Strengths.....	10
Areas for Improvement.....	11
Media and Social Media Analysis	12
Earned Media	13
2-1-1 Reporting	14
Appendix A: Improvement Plan.....	1
Appendix B: Participating Organizations	1

KEY CHRONOLOGICAL EVENTS

November 8, 2023

Phase I meeting with Operational Area (OA) partners to begin planning for winter warming center operations. The purpose of the call is to go over roles/responsibilities of each agency, severe weather guidance and a time for the NWS to provide us an overview of the seasonal predictions and any new information pertinent to Sacramento County.

November 25-27, 2023

Phase II meeting with Operational Area (OA) partners to discuss actions for upcoming freeze event. NWS issued Freeze Watch from 2am-9am for November 25th and 26th. Soon to follow was an NWS issued Freeze Warning from the 25th to the 28th, from 2am-9am each day. Department of Human Assistance and Department of Homeless Services and Housing had warming centers available. OES severe weather thresholds were not met.

December 7, 2023

Phase II meeting with Operational Area (OA) partners to discuss actions for upcoming cold temperatures; forecasted 35 degrees or below for three consecutive days. Department of Homeless Services and Housing and City of Sacramento had warming centers available. OES severe weather thresholds were not met.

January 4, 2024

Phase II/III meeting with Operational Area (OA) partners to discuss actions for upcoming cold temperatures; forecasted 35 degrees or below for three consecutive days as well as 50% (or greater) chance of reaching 32 degrees for three consecutive days. Department of Homeless Services and Housing, City of Sacramento, and County OES had warming centers available.

NWS Alerts

NWS Freeze Warning; 25-29 Nov

New event. Freeze Watch from 11/26/2023 2:00 AM to 9:00 AM PST for Poly, Sac Co. [More information.](#)

New event. Freeze Watch from 11/25/2023 2:00 AM to 9:00 AM PST for Poly, Sac Co. [More information.](#)

New event. Freeze Watch from 11/26/2023 2:00 AM to 9:00 AM PST for Poly, Sac Co, Sacramento County, CA. [More information.](#)

New event. Freeze Watch from 11/25/2023 2:00 AM to 9:00 AM PST for Poly, Sac Co, Sacramento County, CA. [More information.](#)

New event. Freeze Warning from 11/25/2023 2:00 AM to 9:00 AM PST for Poly, Sac Co, Sacramento County, CA. [More information.](#)

New event. Freeze Warning from 11/26/2023 2:00 AM to 9:00 AM PST for Poly, Sac Co, Sacramento County, CA. [More information.](#)

New event. Freeze Warning from 11/27/2023 2:00 AM to 9:00 AM PST for Poly, Sac Co, Sacramento County, CA. [More information.](#)

New event. Freeze Warning from 11/28/2023 2:00 AM to 9:00 AM PST for Poly, Sac Co, Sacramento County, CA. [More information.](#)

Event extended (area). Frost Advisory from 11/27/2023 10:00 PM to 11/28/2023 9:00 AM PST for Poly, Sac Co. [More information.](#)

Phase III Temps; 7-9 Jan

New event. Frost Advisory from 1/7/2024 12:00 AM to 10:00 AM PST for Poly, Sac Co. [More information.](#)

New event. Frost Advisory from 1/8/2024 12:00 AM to 10:00 AM PST for Poly, Sac Co. [More information.](#)

Plan Review

Phase II: Criteria	NWS Freeze Warning 25-29 Nov	Phase III Temps 7-9 Jan
A partner email from the National Weather Service (NWS), giving an outlook for an extended period of below average temperatures.	MET	MET
The NWS Sacramento issues an Frost Advisory or Freeze Warning.	MET	MET
The NWS Sacramento has issued forecasts via their website for Sacramento Executive Airport weather station for three or more consecutive days of temperatures at or below 35 degrees.	MET	MET
Increased cold temperature related EMS calls or increased emergency department visits.	NOT MET	MET
Notification to/from the Office of Emergency Services (OES) that local jurisdictions have issued a special notice (warning, alert, etc.), however the EOCs have not been activated.	NOT MET	NOT MET
Projected abnormal animal mortality rates.	NOT MET	NOT MET
Credible reports of anticipated power outages, electrical blackouts, or rotating blackouts. SMUD has identified industry power shortages or limitations and will be asking customers to reduce or ration their electrical usage. This will typically coincide with a CAISO Level 3 warning.	NOT MET	NOT MET
Extreme Cold accompanied by electrical blackouts or rotating outages within Sacramento Operational Area.	NOT MET	NOT MET

Phase II: Actions	NWS Freeze Warning 25-29 Nov	Phase III Temps 7-9 Jan
OES Duty Officer will make appropriate internal OES notifications including activating a seasonal incident in WebEOC.	COMPLETED	COMPLETED
Participate in periodic or daily calls as needed regarding weather and power updates.	COMPLETED	COMPLETED
Weather coordination calls are conducted with key agencies to provide/gather weather and utility updates, upon forecasts of 35	COMPLETED	COMPLETED

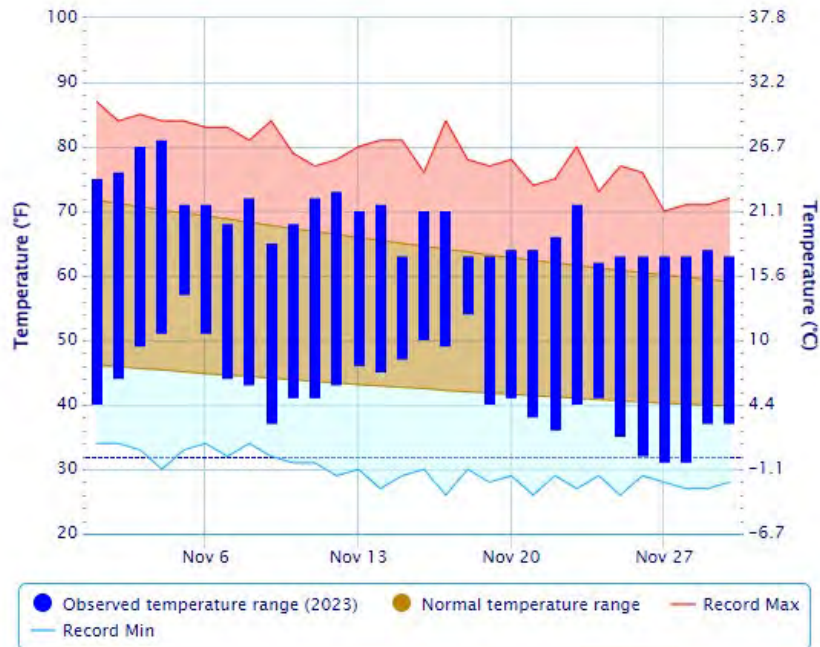
degrees or lower for three or more consecutive days.		
OES Duty Officer and/or Mass Care and Shelter Coordinator will track and fill resource requests from cooperating agencies choosing to open warming centers.	COMPLETED	COMPLETED
Sacramento County Public Health Officer may issue a Health Alert to the Operational Area (OA).	NA	NA
Collaborate to identify any anticipated needs or problems.	COMPLETED	COMPLETED
Sacramento County DHA may institute their Weather Respite Motel Program and issue motel vouchers to highly vulnerable unsheltered persons, dependent upon funding and room availability.	COMPLETED	NA
OES Duty Officer will coordinate to determine the readiness and availability of resources.	COMPLETED	COMPLETED
OES will coordinate with PIOs to issue joint press releases increasing awareness of the risks from the extreme cold conditions for vulnerable populations and the general public.	COMPLETED	COMPLETED
Release critical pre-scripted and event-related public safety information.	COMPLETED	COMPLETED
Review criteria for warming centers keeping in mind considerations for pets and possible 24-hour operations.	COMPLETED	COMPLETED

Phase III: Criteria	NWS Freeze Warning 25-29 Nov	Phase III Temps 7-9 Jan
The NWS Sacramento provides probabilistic data with a 50% or greater chance of low temperatures at 32 degrees or lower for 3 consecutive days.	NOT MET	MET
The NWS Sacramento issues a Partner Email, Frost Advisory or Frost Warning or Freeze Warning in addition to:	MET	MET
Abnormal animal mortality due to extreme cold.	NOT MET	NOT MET
Abnormal human medical emergencies and mortality due to extreme cold conditions.	NOT MET	NOT MET
SMUD electrical emergency and/or extended power outages due to extreme cold conditions or supply constraints.	NOT MET	NOT MET

Phase III: Actions	NWS Freeze Warning 25-29 Nov	Phase III Temps 7-9 Jan
All activities under Phase II; and	COMPLETED	COMPLETED
Sacramento County Public Health Officer may issue a Health Emergency.	NA	NA
Opening of warming centers, if necessary.	NA	COMPLETED
Emergency Operations Center (EOC) activation, as needed to support response activities.	NA	NA
Request for Local Emergency Proclamation, if applicable.	NA	NA
Confirm 2-1-1 will post warming center locations on websites, if opened or activated.	COMPLETED	COMPLETED
Increase press releases and public outreach informing public of center locations and steps to take to alleviate risks of health impacts associated with extreme cold emergency conditions.	COMPLETED	COMPLETED
Requests for mutual aid may occur.	NA	NA
Activate transportation plan to make warming center more accessible.	COMPLETED	COMPLETED
Establish communication with local dialysis centers, skilled nursing facilities, and long-term care facilities to monitor for possible medical impacts if there is a concern regarding potential, prolonged, or rolling power outages or blackouts.	COMPLETED	COMPLETED
Monitor rendering capacity statewide	NA	NA
Coordinate with SMUD to identify and develop procedures for assigning “Critical Infrastructure” status temporarily to Warming Centers that could be exempted from rotating blackouts	COMPLETED	COMPLETED

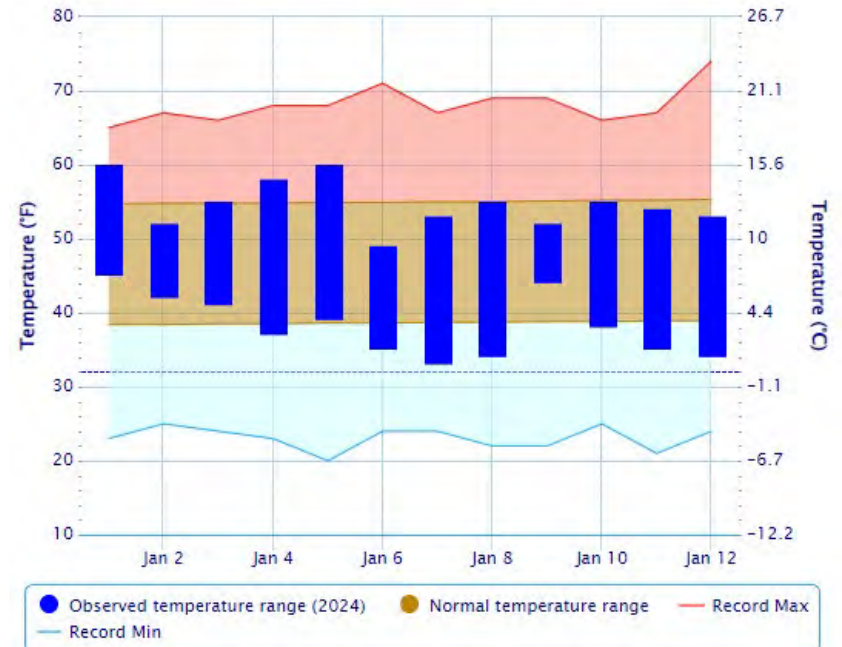
NWS Freeze Warning – 25-29 Nov

Daily Temperature Data – Sacramento Area, CA (ThreadEx)

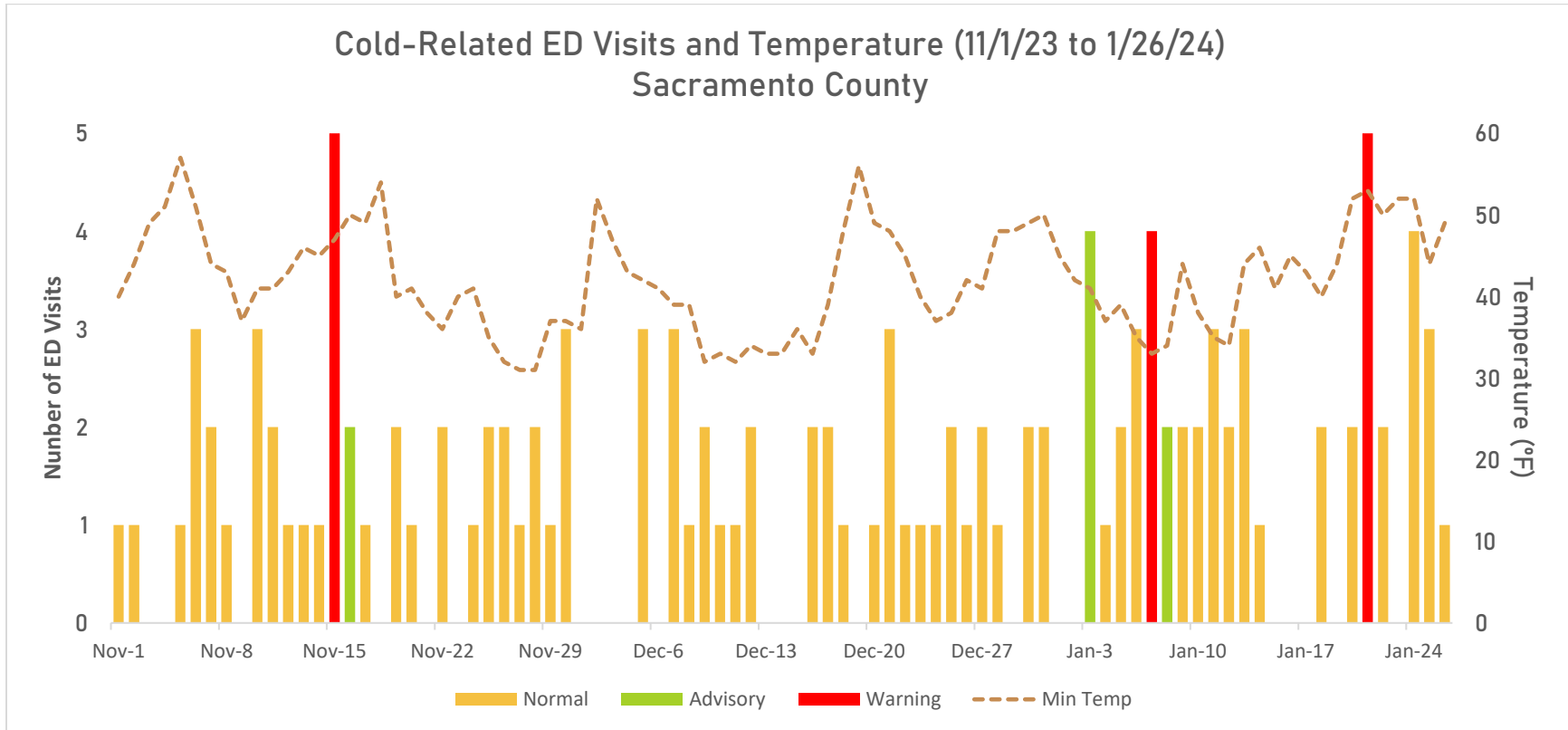


Phase III Temps – 7-9 Jan

Daily Temperature Data – Sacramento Area, CA (ThreadEx)



Public Health Emergency Department Visits



Coroner Report

At the time of publication, the County Coroner determined the following deaths during 2023/2024 winter were, or possibly were, cold related. The Coroner may verify additional deaths later and remains the official source of death reporting for Sacramento County.

Description
23-05951 12/5/2023: Decedent was a 69 year old unhoused male who was transported to Mercy General Hospital on the morning of 12/5/23. He was reportedly brought in from unknown location in East Sacramento. He reported to EMS that he was cold. The decedent was diagnosed with hypothermia (81 degrees). His condition declined after his admission, and he was pronounced dead on the night of 12/5/23. The attending physician is attributing the death to Hypothermia.

GENERAL STATISTICS

	Total Locations	Days Open	Visitors	Pets	Staff Hours	Volunteer Hours	Operational Costs
Centers	3	2	198	10	118	192	\$5,987
General Logistics				Quantity	Price / Per	Total Cost	
Ice (Pounds)				0	TBD	0	
Water (24-pack Cases)				2	\$9.20 / case	\$18.40	
Snack (Individual Servings)				30	\$0.24 / piece	\$7.20	
Blankets				20	\$7.76 / blanket	\$155.20	
MRE				0	\$51.93 / case (12)	0	
Face Coverings				0	\$30 / carton (20)	0	
Purchases (fans, coolers)				0	Varies	0	
Rentals (fans, air conditioners, hand washing)				0	Varies	0	
Staff Hours				118	Varies	Varies	
Volunteer Hours				0	<u>\$37.32</u>	\$7,165.44	

Centers Utilized

County of Sacramento, Department of Homeless Services and Housing

Operational Cost: \$5787

Volunteer value: \$7165.44

Location	Days	Hours	Guests	Pets	Staff Hrs	Vol Hrs
Warren E Thornton Youth Center (WETYC) gym 4000 Branch Center Road, Sacramento	7 Jan	24/7	50	2	0	96
	8 Jan	24/7	54	2	2	96

Numbers above reflect County staff/volunteers. WETYC is operated by First Step Communities: 117.12 hours total; \$3,454 staffing costs; \$1,883 other costs – not portrayed above

County of Sacramento

Operational Cost: \$200

Volunteer value: \$0

Location	Days	Hours	Guests	Pets	Staff Hrs	Vol Hrs
Howe Community Park 2201 Cottage Way, Sacramento	7-8 Jan	7pm-7am	5	0	32	0
	8-9 Jan	7pm-7am	5	1	36	0

City of Sacramento

Operational Cost: \$0

Volunteer value: \$0

Location	Days	Hours	Guests	Pets	Staff Hrs	Vol Hrs
Outreach Center 3615 Auburn Blvd	7 Jan	24/7	45	3	24	0
	8 Jan	24/7	39	4	24	0

STRENGTHS

Partnerships

The great partnership between the Office of Emergency Services and Animal Care & Services was instrumental in the efficient kennel request to delivery process.

Strength 1.1: Animal Care and Service Officers were able to deliver kennels to any of the established warming centers in the County on the same day as the request.

Our pre-coordination, trust and reliance on community partners is paramount. We could not care for our community the way we needed to without them.

Strength 1.2: Howe Park has been a phenomenal partner during extreme weather events. They will adjust schedules and make every effort to offer a location that supports a community in need.

First Step Communities' contract with the Department of Homeless Services and Housing has been a great step forward in providing weather respites for the unhoused community.

Strength 1.3: They are able to provide known locations, staffed with experienced professionals, and offer on-site services.

AREAS FOR IMPROVEMENT

Equipment

Moving the shelter trailer to a center requires the use of a tow vehicle and someone comfortable towing a trailer. It also means having to move items in and out of it for setup, operation, and demobilization in a very tight space. Unlike a shelter where many of the large items are removed, making space in the trailer to maneuver. There are large, sometimes heavy, cases with little space to maneuver. There is also a large step down from the floor of the trailer to the ground which is dangerous while carrying equipment.

Improvement 1.1: Purchase cooling/warming center “go kits” stocked with the essentials to operate a center. These kits should be manageable in size and have handles and wheels for easy movement. Once a center need is identified, these “go kits” can be placed in, and transported by, smaller vehicles.

Standardized Reporting

Guest registration and attendance count policies for cooling, warming, clean air centers and shelters are not standardized between facilities or between county and city departments, or partner agencies. Standardizing helps ensure we capture and report the same numbers in the same format. When volunteers transition between the types of facilities there is more familiarity and less training required.

Improvement 2.1: Standardize registration and attendance count policies between county and city departments as well as between the different types of facilities. Use Red Cross policies as a starting point.

Improvement 2.2: Standardize documents in applicable plans and annexes and distribute them throughout the Operational Area.

MEDIA AND SOCIAL MEDIA ANALYSIS

Facebook

Number of Posts	3
Impressions	16,605
Average Daily Total Reach	15,550
Total Engagement	280
Engagement Rate	0.4%

X (formerly Twitter)

Number of Posts	3
Impressions	7886
Total Engagement	642
Extension Rate The sum of reposts divided by the sum of impressions	0.15%
Engagement Rate The sum of all actions divided by the sum of impressions	8.14%

Facebook November:

- <https://www.facebook.com/SacramentoCounty/posts/pfbid0vBKNXVr9s7GXE3JDX9yFsUnbLjLtVtFBgJY7REvvB5Qtbmev1bJ3QfPQqbMfLsXCI>
- <https://www.facebook.com/SacramentoCounty/posts/pfbid06o9udZhSNdqRnxvsyoQK3shN7ASVFrETihhHE2gnp2eXWh4uqTZbcrKdJKEVPVUil>

Facebook January:

- <https://www.facebook.com/SacramentoCounty/posts/pfbid02b7thk7AKKE1DrJDY4zn6ntUQ4Uxvwy24G3S3FwazMnLwdaCmVL84dqHW4ojM9sCSl>

Twitter November:

- <https://x.com/SacCountyCA/status/1727779054349431287?s=20>

Twitter January:

- <https://x.com/SacCountyCA/status/1743429359619461314?s=20>
- <https://x.com/SacCountyCA/status/1742633866240872841?s=20>

EARNED MEDIA

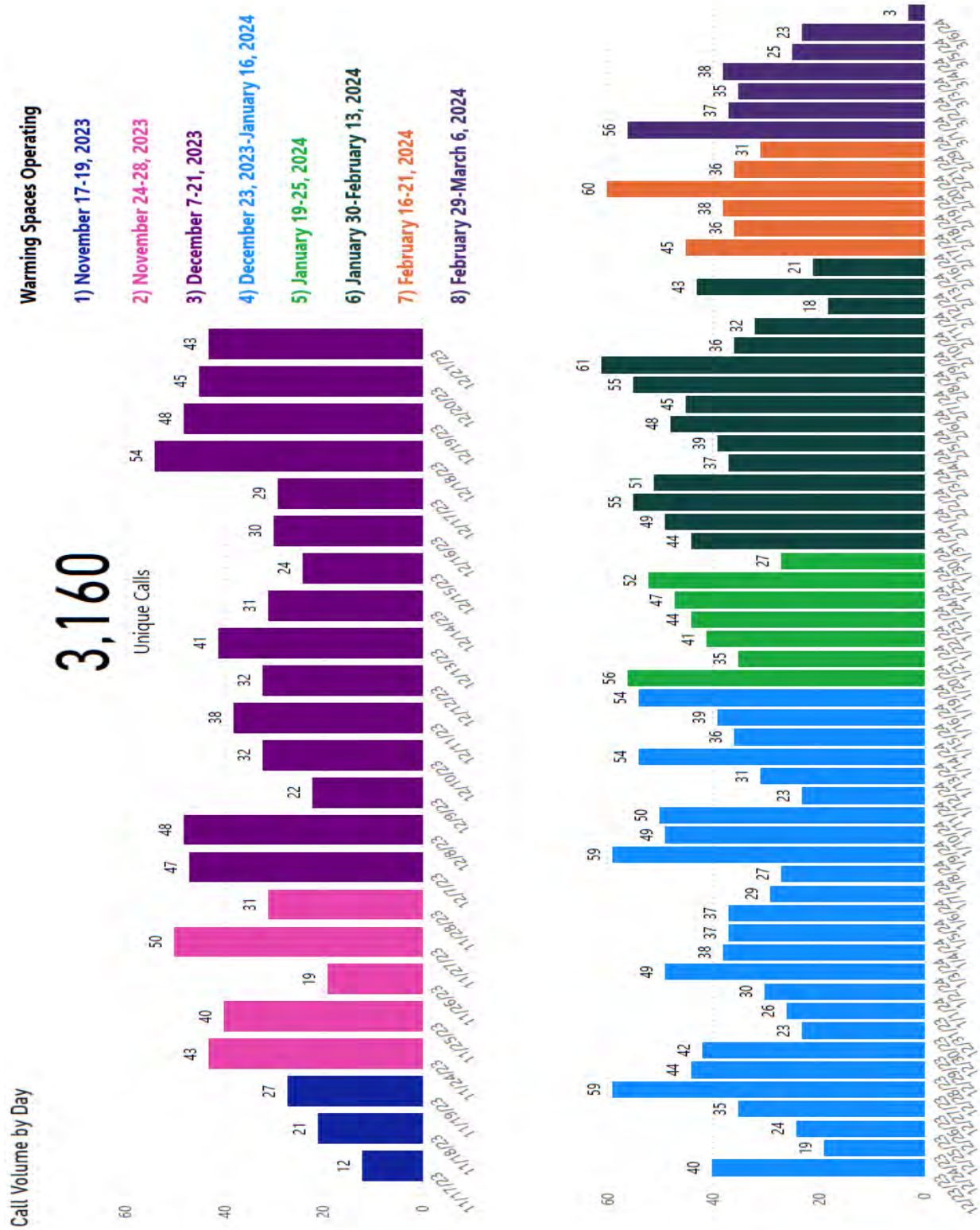
January 2024:

- <https://www.kcra.com/article/sacramento-weather-respite-centers-stay-open-longer/46333243>
- <https://news.yahoo.com/weather-respite-operations-extended-sacramento-195744593.html>

November 2023:

- <https://www.capradio.org/articles/2023/11/17/sacramento-warming-centers-open-this-weekend-ahead-of-forecasted-thunderstorms-friday/>
- <https://www.kcra.com/article/sacramento-weather-respite-shelters-open-for-the-weekend/45879677>
- <https://www.abc10.com/article/news/local/sacramento/sacramento-opening-warming-centers-thanksgiving-weekend/103-1eebea66-621d-4bbd-84b3-efc54936276a>

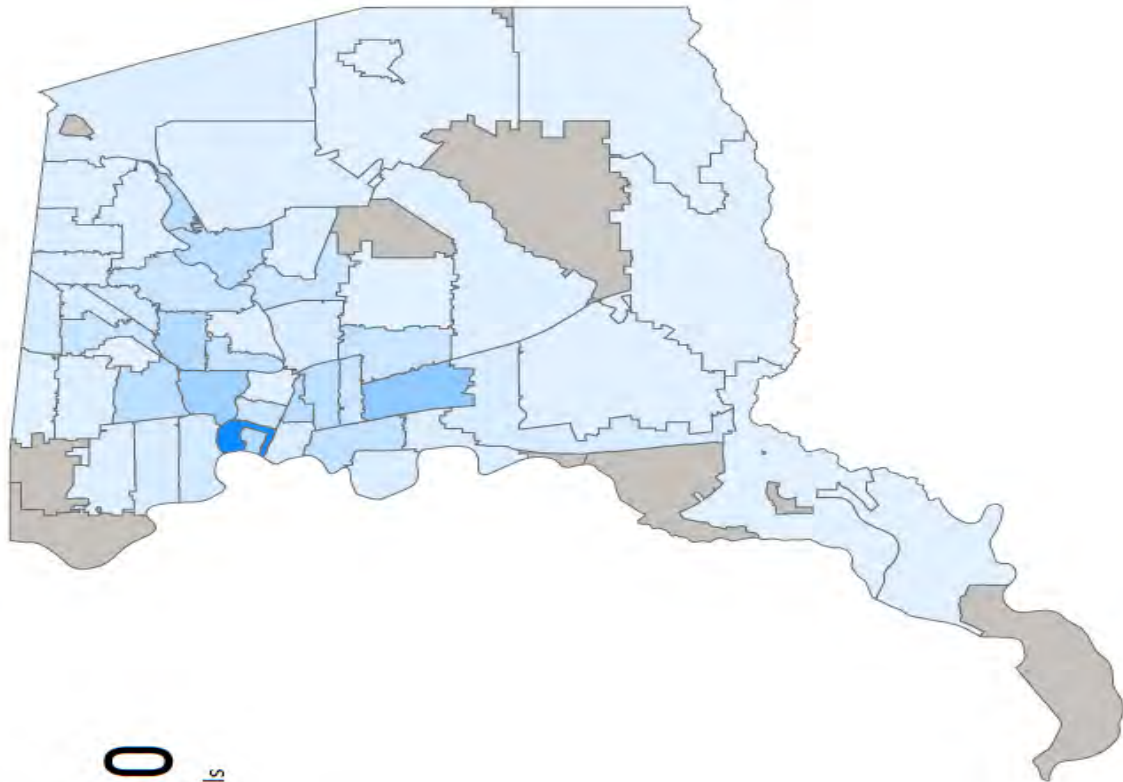
2-1-1 REPORTING



Callers by Postal Code

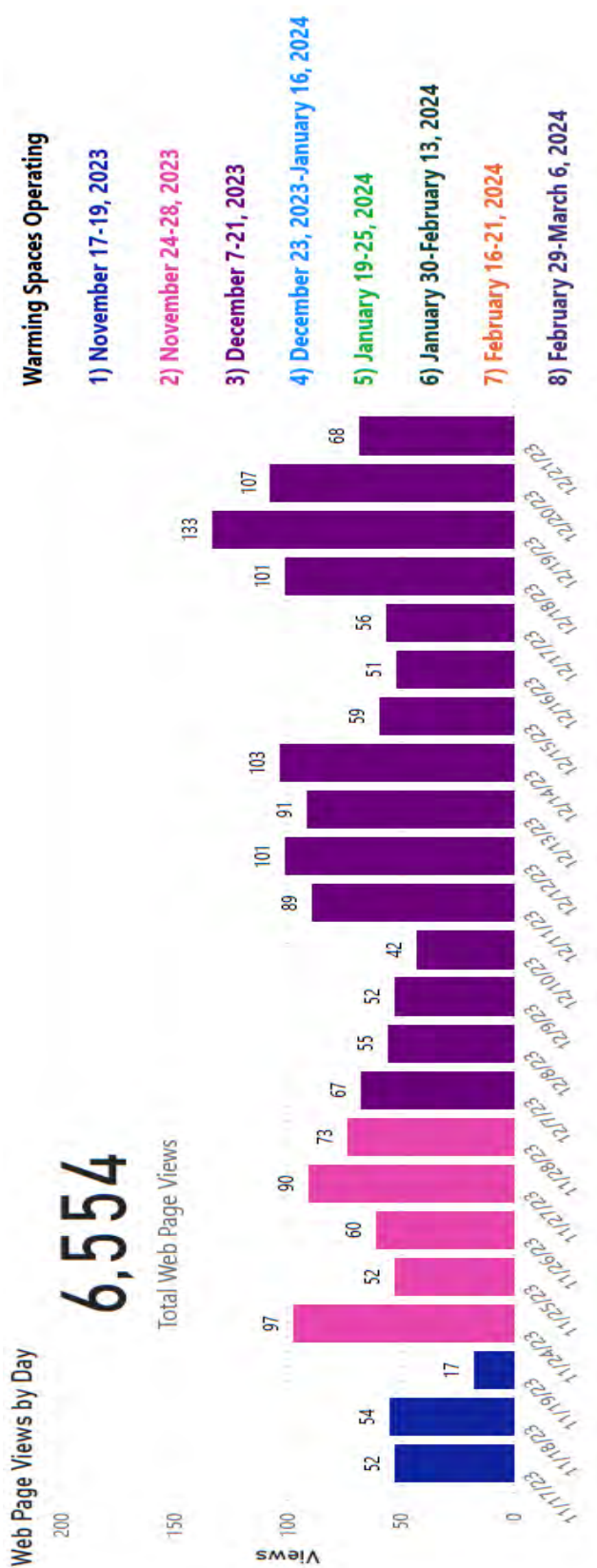
3,160

Unique Calls



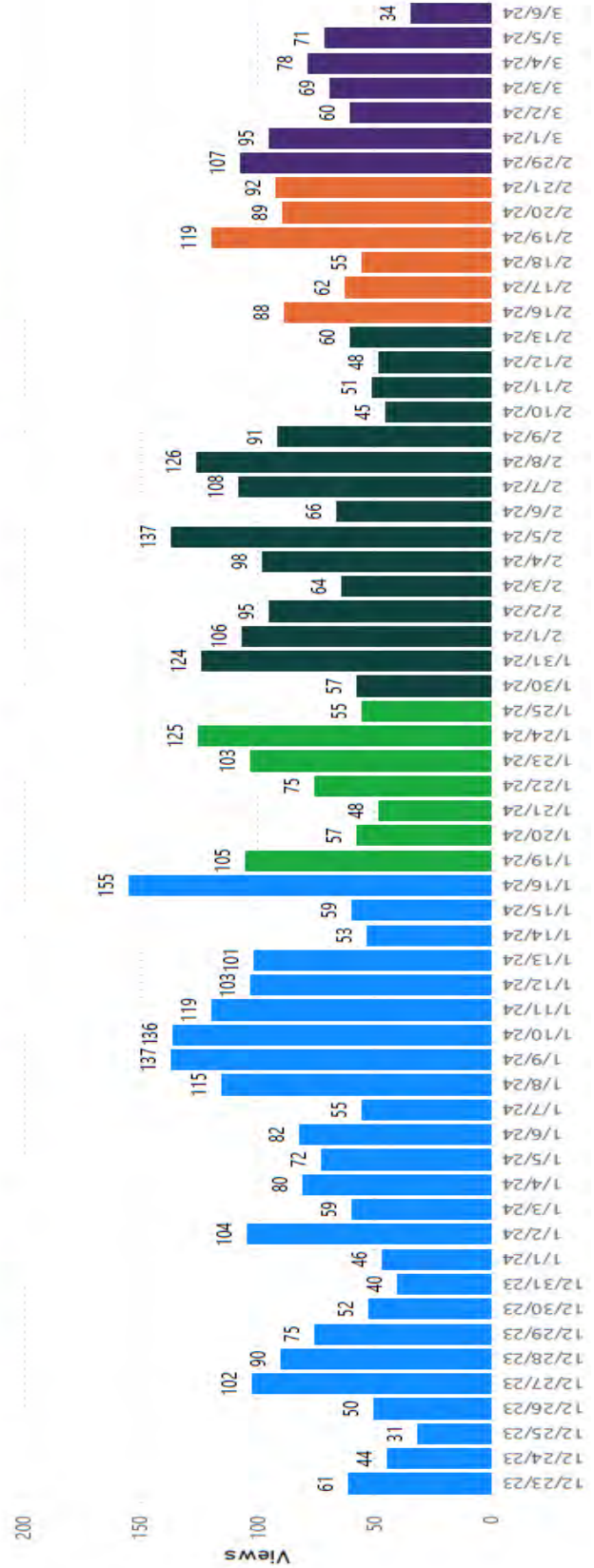
PostalCode	Count
95811	476
95823	186
95815	148
95821	110
95814	107
95817	89
95670	88
95838	86
95820	82
95825	73
95822	72
95824	57
95660	56
95816	56
95828	56
95608	52
95827	51
95841	41
95833	34
95842	29
95826	28
95834	27
95843	25
95818	24
95758	23
95621	21

PostalCode	Count
95610	16
95655	16
95831	16
95832	16
95628	13
95630	13
95624	12
95673	11
95819	11
95835	11
95864	11
95742	10
95662	9
95812	5
95652	4
95757	4
95829	3
95632	2
94205	1
95626	1
95638	1
95641	1
95683	1
95690	1
95741	1
95840	1
95860	1

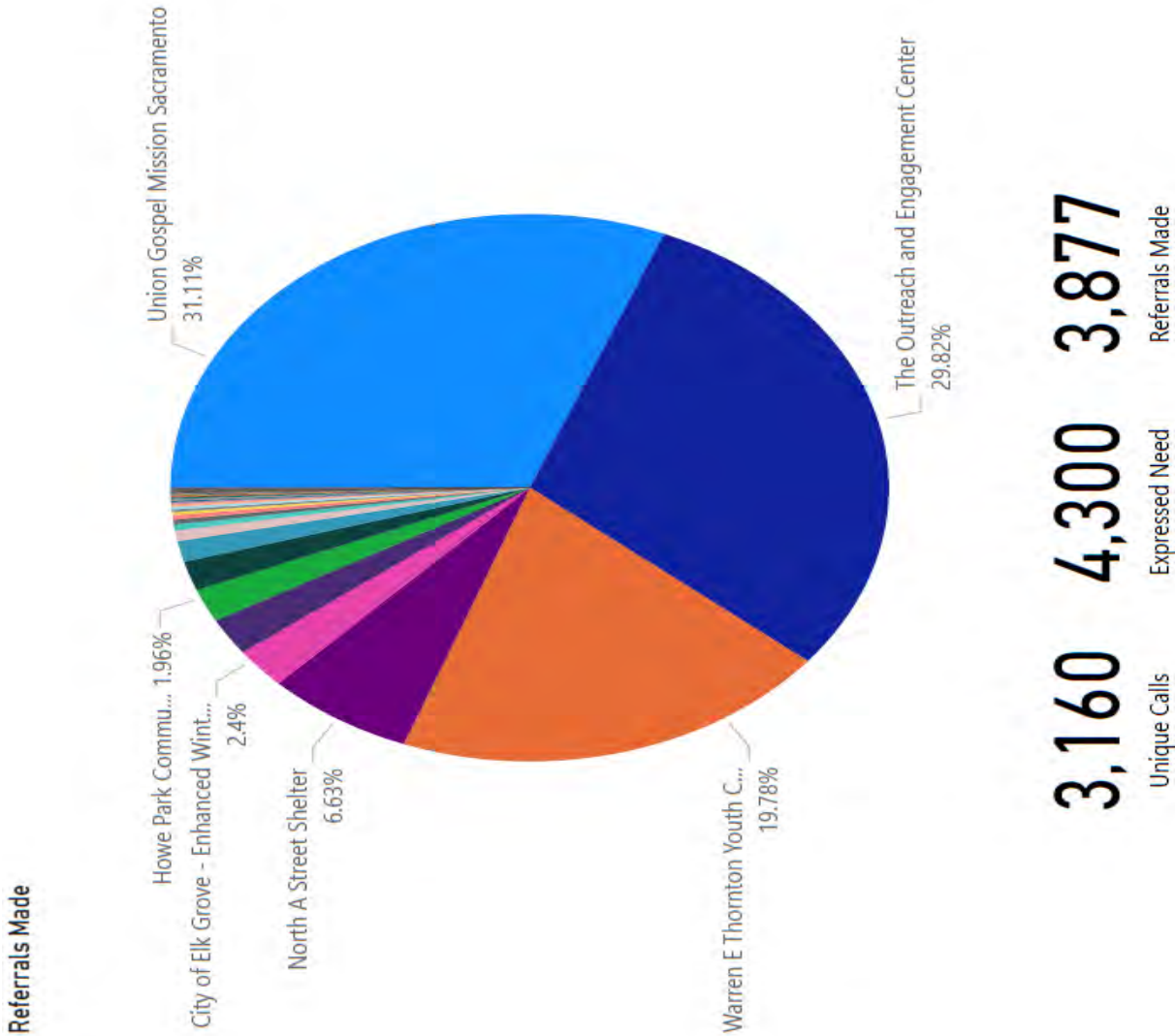


Warming Spaces Operating

- 1) November 17-19, 2023
- 2) November 24-28, 2023
- 3) December 7-21, 2023
- 4) December 23, 2023-January 16, 2024
- 5) January 19-25, 2024
- 6) January 30-February 13, 2024
- 7) February 16-21, 2024
- 8) February 29-March 6, 2024



Severe Weather Site	Count
Union Gospel Mission Sacramento	1,206
The Outreach and Engagement Center	1,156
Warren E Thornton Youth Center Gym	767
North A Street Shelter	257
City of Elk Grove - Enhanced Winter Sanctuary	93
Rotating Winter Shelter - Rancho Cordova HART	86
Howe Park Community Center	76
Department of Human Assistance - 28th Street	67
Winter Shelter - HART of Folsom	48
Department of Human Assistance - Fulton Avenue	24
Department of Human Assistance - 28th & R Street Bureau	14
Arcade Library	11
Tinny Episcopal Cathedral	10
Central Library	7
Davis Community Meals and Housing - Resource Center	6
Saint John's Lutheran Church	6
Westminster Presbyterian Church	6
Carmichael Library	4
First United Methodist Church	4
Department of Human Assistance - Research Drive Bureau	3
Sacramento LGBT Community Center	3
Belle Cooleage Community Center	2
Department of Human Assistance - Florin Road	2
Department of Human Assistance - North Highlands Bureau	2
Southgate Library	2
Arden-Dimick Library	1
Belle Cooleage Library	1
Del Paso Heights Library	1
Department of Human Assistance - Galt Bureau	1
Esparto Regional Branch Library	1
Fair Oaks Library	1
George Sim Community Center	1
Martin Luther King Jr. Library	1
McKinley Library	1
Midtown - Hart Senior Center	1
Total	3,877



APPENDIX A: IMPROVEMENT PLAN

This IP has been developed specifically for Sacramento County because of the 2023/2024 Severe Weather. All corrective actions are entered into WebEOC for tracking over time.

Corrective Action Area	Issue/Area for Improvement	Corrective Action	Primary Responsible Organization	Organization POC	Start Date	Completion Date
1.1	Equipment	Purchase cooling/warming center “go kits” stocked with the essentials to operate a center. These kits should be manageable in size and have handles and wheels for easy movement. Once a center need is identified, these “go kits” can be placed in, and transported by, smaller vehicles.	Sac OES	N. Benson	Apr 2024	Aug 2024
2.1	Standardized Reporting	Standardize registration and attendance count policies between county and city departments as well as between the different types of facilities. Use Red Cross policies as a starting point.	Sac OES	N. Benson	Apr 2024	Nov 2024
2.2	Standardized Reporting	Standardize documents in applicable plans and annexes and distribute them throughout the Operational Area.	Sac OES	N. Benson	Apr 2024	As Updated

APPENDIX B: PARTICIPATING ORGANIZATIONS

- 2-1-1 Sacramento
- American Red Cross
- CalOES
- City of Citrus Heights
- City of Folsom
- City of Folsom Fire
- City of Galt
- City of Rancho Cordova
- City of Sacramento
- City of Isleton
- Cosumnes Community Services District
- Cosumnes Fire District
- County Library
- First Step Communities
- Howe Park
- Medical Reserve Corps
- National Weather Service, Sacramento
- Regional Parks
- Regional Transit
- Sacramento County Animal Care and Services
- Sacramento County Department of Health Services
- Sacramento County Department of Human Assistance
- Sacramento County Department of Homeless Services and Housing
- Sacramento County Department of Technology 3-1-1
- Sacramento County Sheriff's Office
- Sacramento Food Bank
- Sacramento County OES
- Sacramento Metro Fire
- Sacramento Metropolitan Air Quality Management District (SMAQMD)
- Sacramento Municipal Utility District (SMUD)
- United Cerebral Palsy
- Volunteer Organizations Active in Disasters (VOAD)
- Wilton Fire Department
- Sacramento Self Help Housing (HART)
- ParaTransit

This Page Intentionally Left Blank